

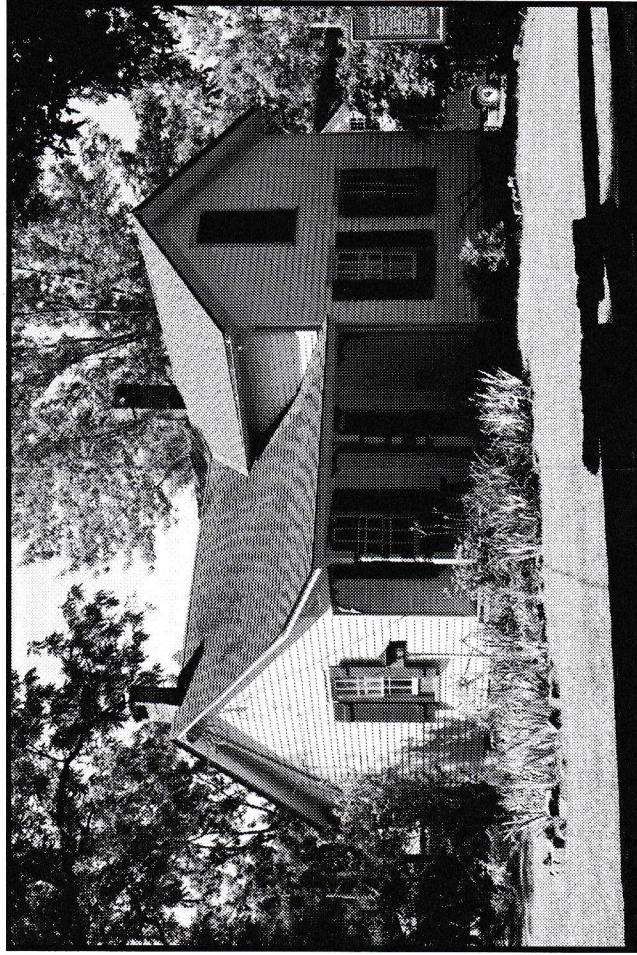
Prechtel House

c. 1874

Martin and Margaretha Haushahn Prechtel were German immigrants who came to America before the Civil War. The house which bears their name was built by Adam Poe about the time of the nation's centennial. A few months later, Poe sold his home and farm to the Prechtels. A copy of the original Prechtel deed is on display in the house.

Martin Prechtel was both a farmer and cobbler. His shop was located at Kamm's Corners. James Ruple was one of the Prechtel's neighbors. Ruple's house stood at the foot of Fort Hill. Today the site is a parking lot.

William Prechtel, a son, inherited the house and property in 1901, and rented it to several families including the Dvoraks, immigrants from Bohemia. John and Ethel Barker, parents of Olmsted Historical Society member Mrs. Evelyn Franks, were married in the parlor in 1905. During most of 1917, William Prechtel and his wife, Alice Burrington Prechtel, lived in the house with Alice's mother, Jane Spafford Burrington. Alice Prechtel and Jane Burrington are the great-great-aunt and great-great-grandmother of Olmsted Historical Society member Deborah Pabetz. Her grandfather, former Historical Society member Walter Holzworth, wrote the book *Historical Story of Olmsted Township*.



Irving Geist bought the house and farm at the end of 1917 from William Prechtel. Geist sold the property to the Cleveland Metropolitan Park Board on October 5, 1925 a copy of the deed is also in the house. The house continued to be occupied into the 1950's with out indoor plumbing or electricity. After installing electricity in 1962, the Historical Society opened the house as a museum. The Prechtel House has never had indoor plumbing facilities. The furnishings are typical of a country dwelling of the late 19th Century.

Entering the house from the back porch, the pantry is on the left side of the hall. The family mostly gathered in the kitchen. Next to the kitchen, the sink room was for activities requiring water. Water had to be carried in from the well until a pump was later installed. The parlor was used mainly for company. The bedroom off the parlor was sometimes used as a birthing room or a sick room. The second floor has one large room where most of the family slept. The root cellar is accessible either by an outside door or through the pantry.